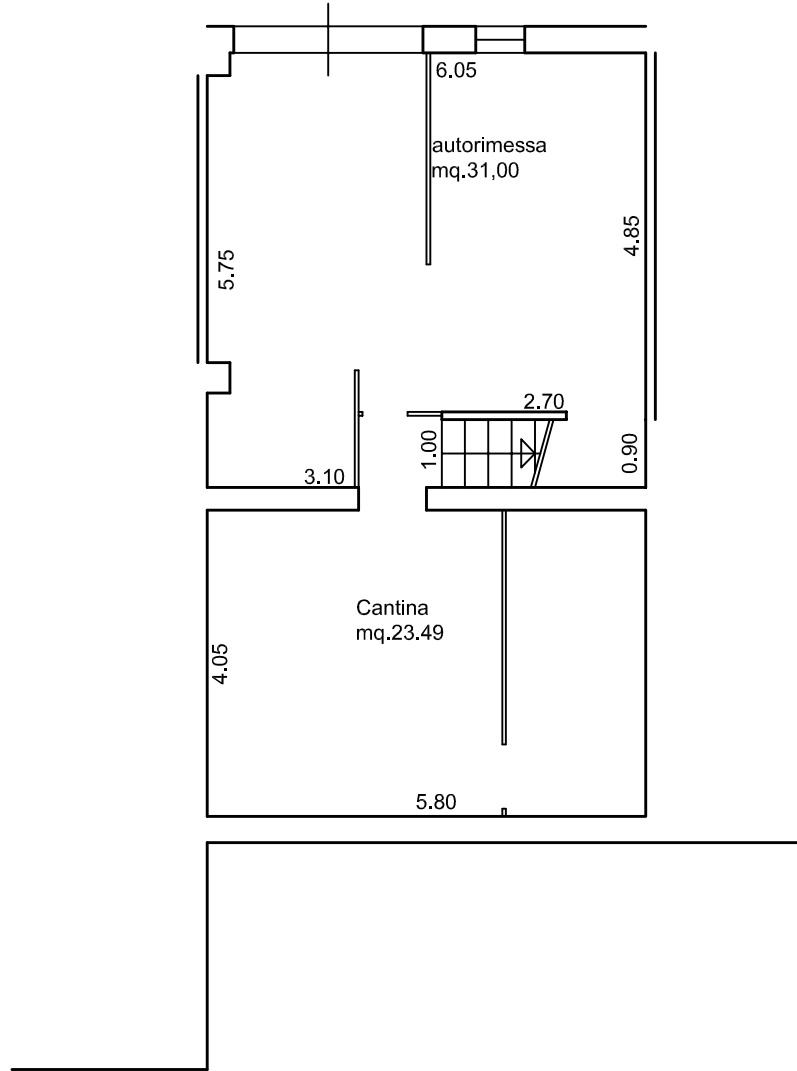
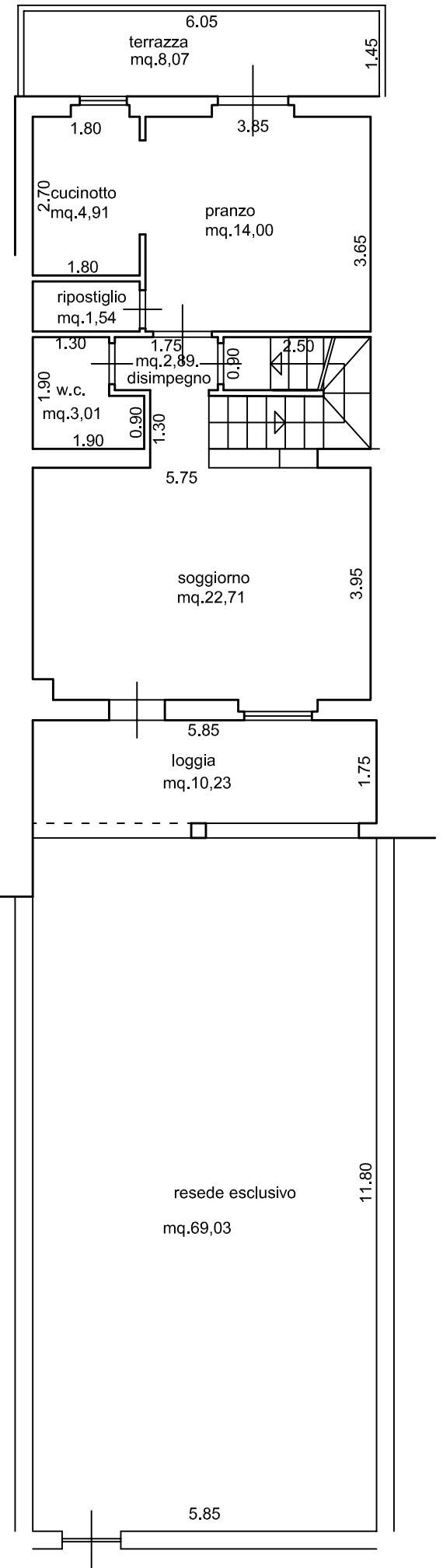


## PIANO SEMINTERRATO



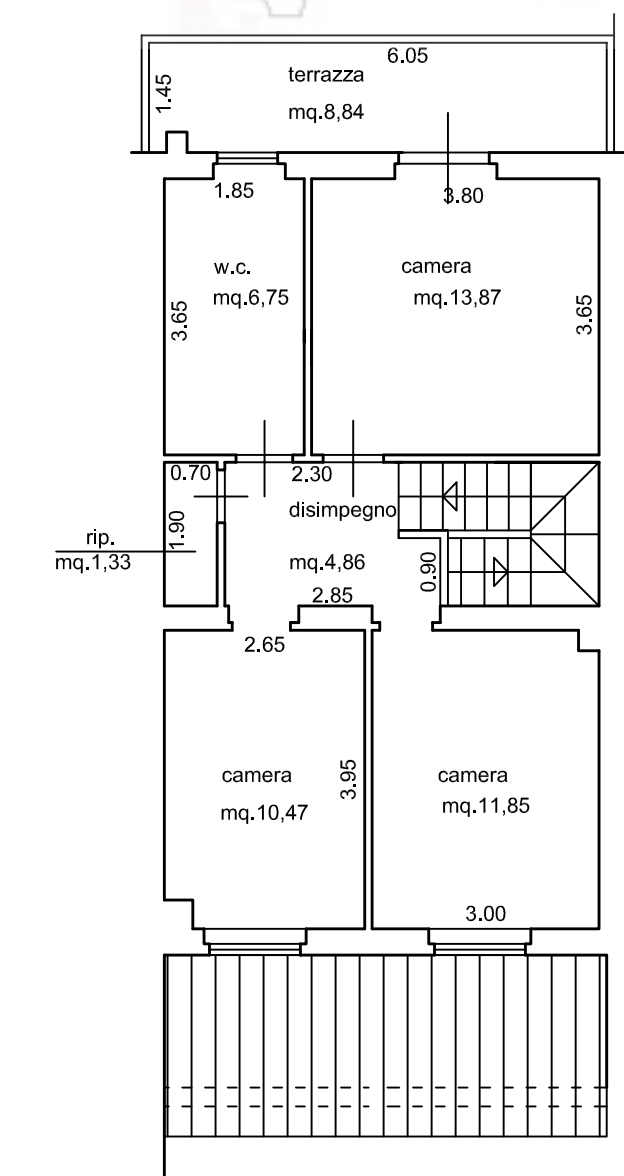
## PIANO TERRENO

MQ.49,06

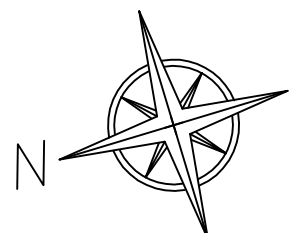


## PIANO PRIMO

MQ.49,13



PROSPETTO CALCOLO SUP.UTILE APPARTAMENTO	
cucinotto	mq. 4,91
pranzo	mq. 14,00
ripostiglio (piano terra)	mq. 1,54
w.c. (piano terra)	mq. 3,01
disimpegno (piano terra)	mq. 2,89
soggiorno	mq. 22,71
camera	mq. 13,87
camera	mq. 11,85
camera	mq. 10,47
ripostiglio (piano primo)	mq. 1,33
w.c. (piano primo)	mq. 6,75
disimpegno (piano primo)	mq. 4,86
<b>totale sup.utile appartamento</b>	<b>mq. 98,19</b>



tecnico redattore

C.T.U. Geometra Giuseppe Altamore

scala 1:100