

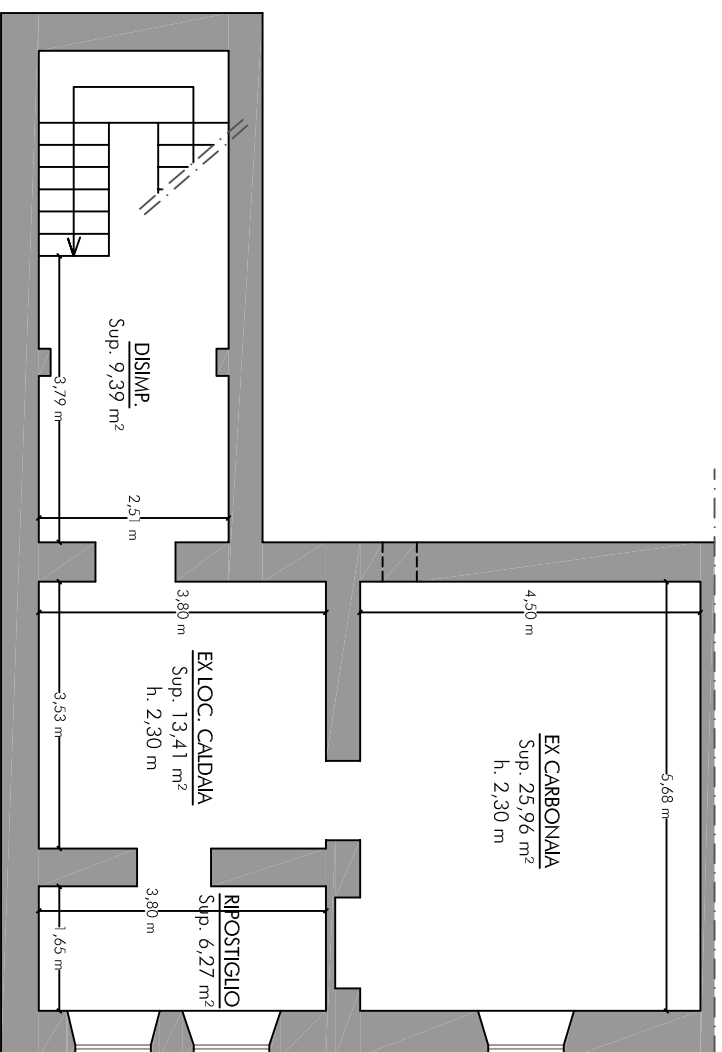
promossa da:
UBI BANCA - UNIONE DI BANCHE ITALIANE SPA (creditore procedente)

contro:

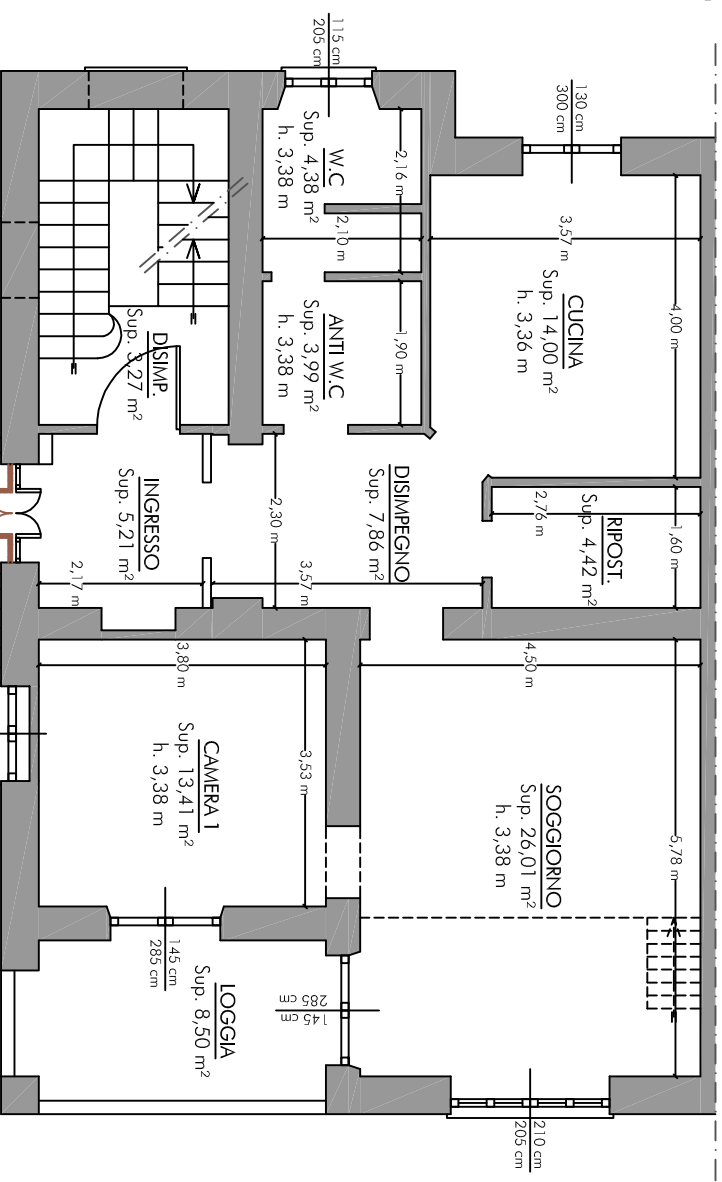
sig. **Andrea MAURI** e sig.ra **Elena BUTTI** (parte esecutata)

N. Gen. Rep. 90/17

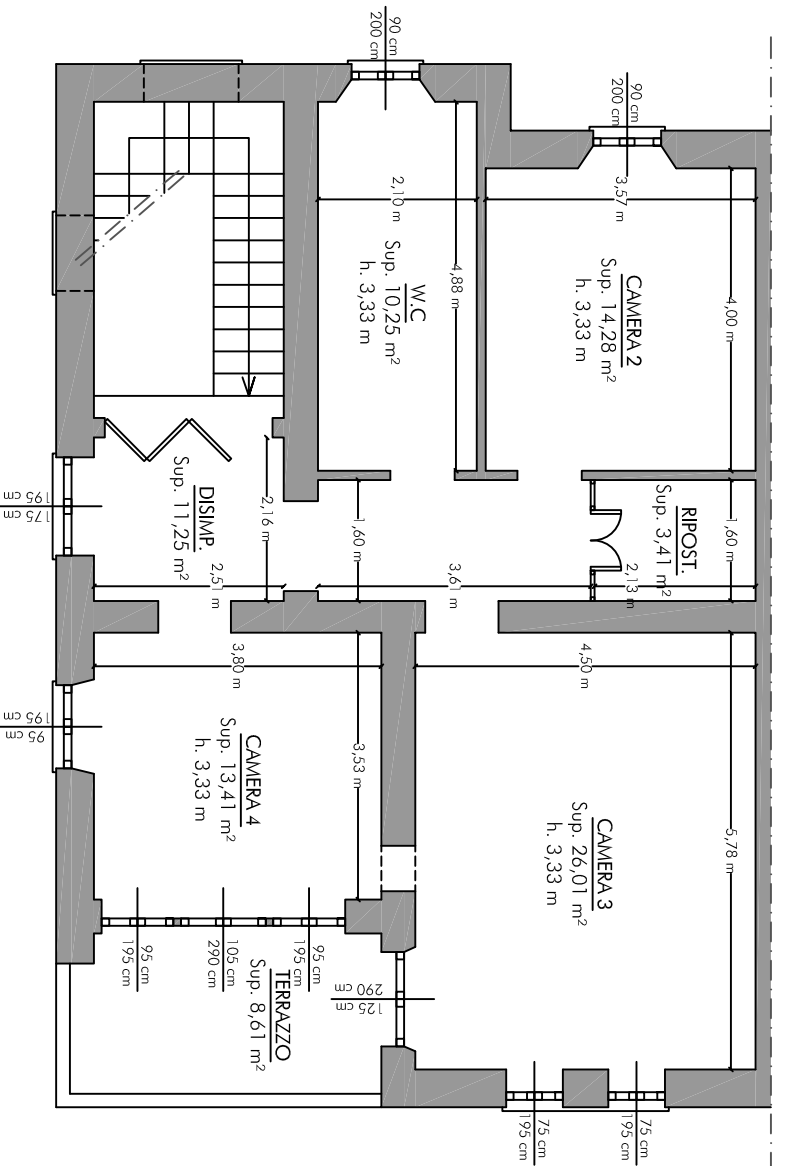
Giudice **Dr. Cristina TABACCHI**



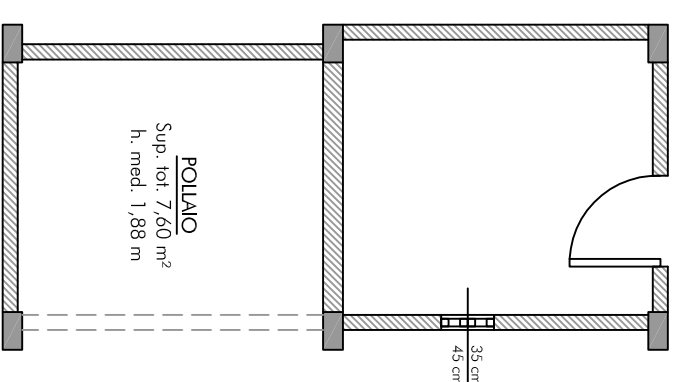
CORPO A - PIANO SEMINTERRATO
SCALA 1/100



CORPO A - PIANO TERRA
SCALA 1/100



CORPO A - PIANO PRIMO
SCALA 1/100



- sup. lorda pollaio 8,95 m²

CORPO B

STATO ATTUALE DEI LUOGHI

CORPO A e CORPO B

CORPO A

- sup. lorda **piano seminterrato** 86,00 m²
- sup. lorda **piano terra** 116,50 m²
- sup. lorda loggia 9,90 m²
- sup. lorda **piano primo** 116,50 m²
- sup. lorda terrazzo 9,90 m²

ATAlegale.net